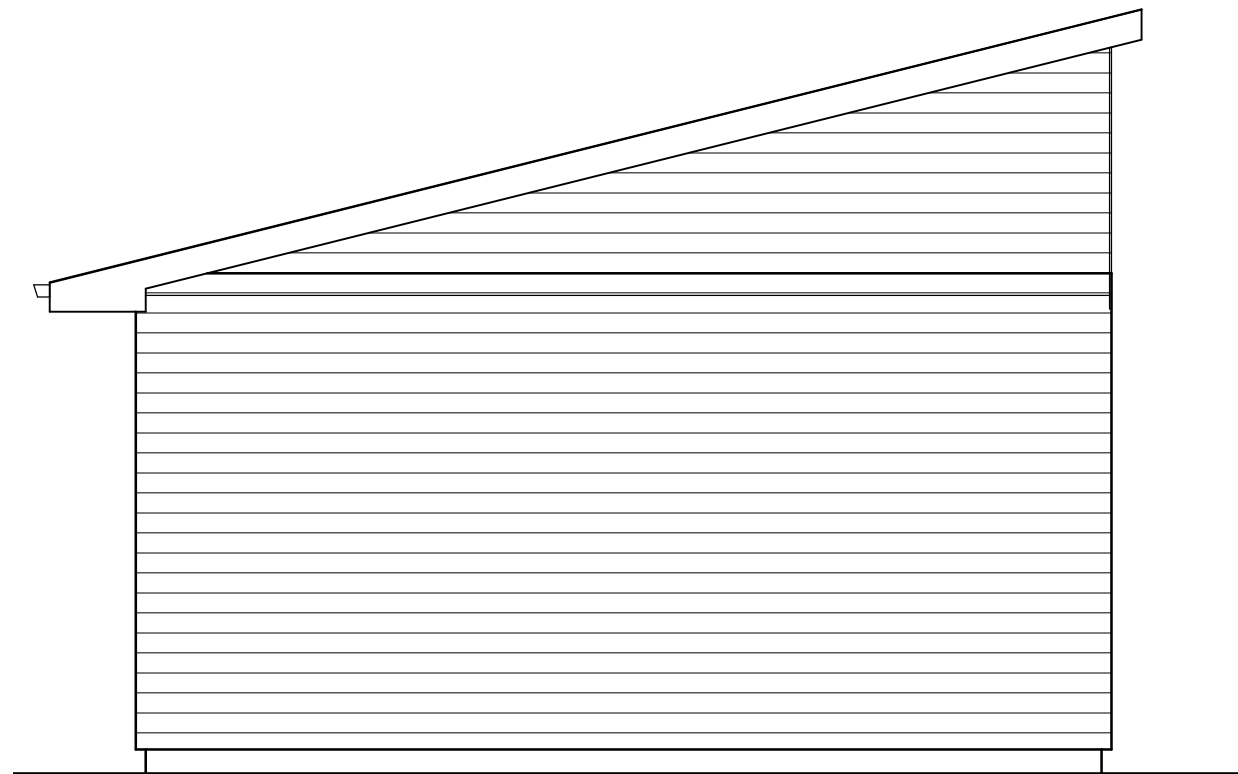


Front Elevation 1/4"=1'



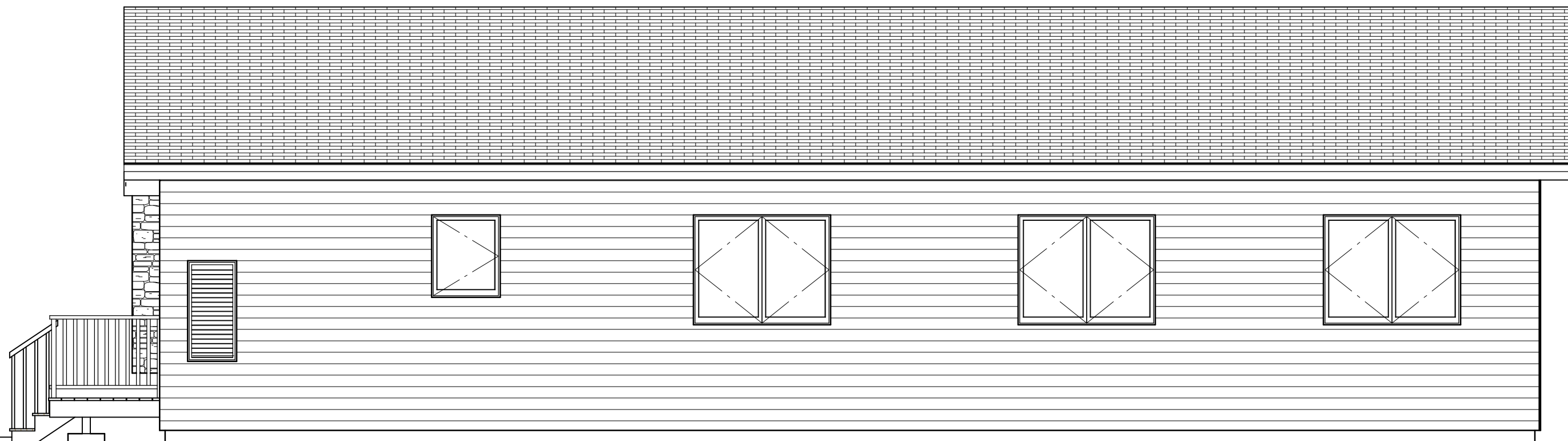
Rear Elevation 1/4"=1'

DakotaPlex
3-Bedroom RH

DakotaPlex 3-Bedroom RH

DESIGN BY:
Mike Harsma

5/3/2021



Right Elevation 1/4"=1'

Window Schedule		
Type	R.O Size	Style
A	60"x48"	Casement
B	30"x36"	Casement
C	72"x60"	Triple Casement

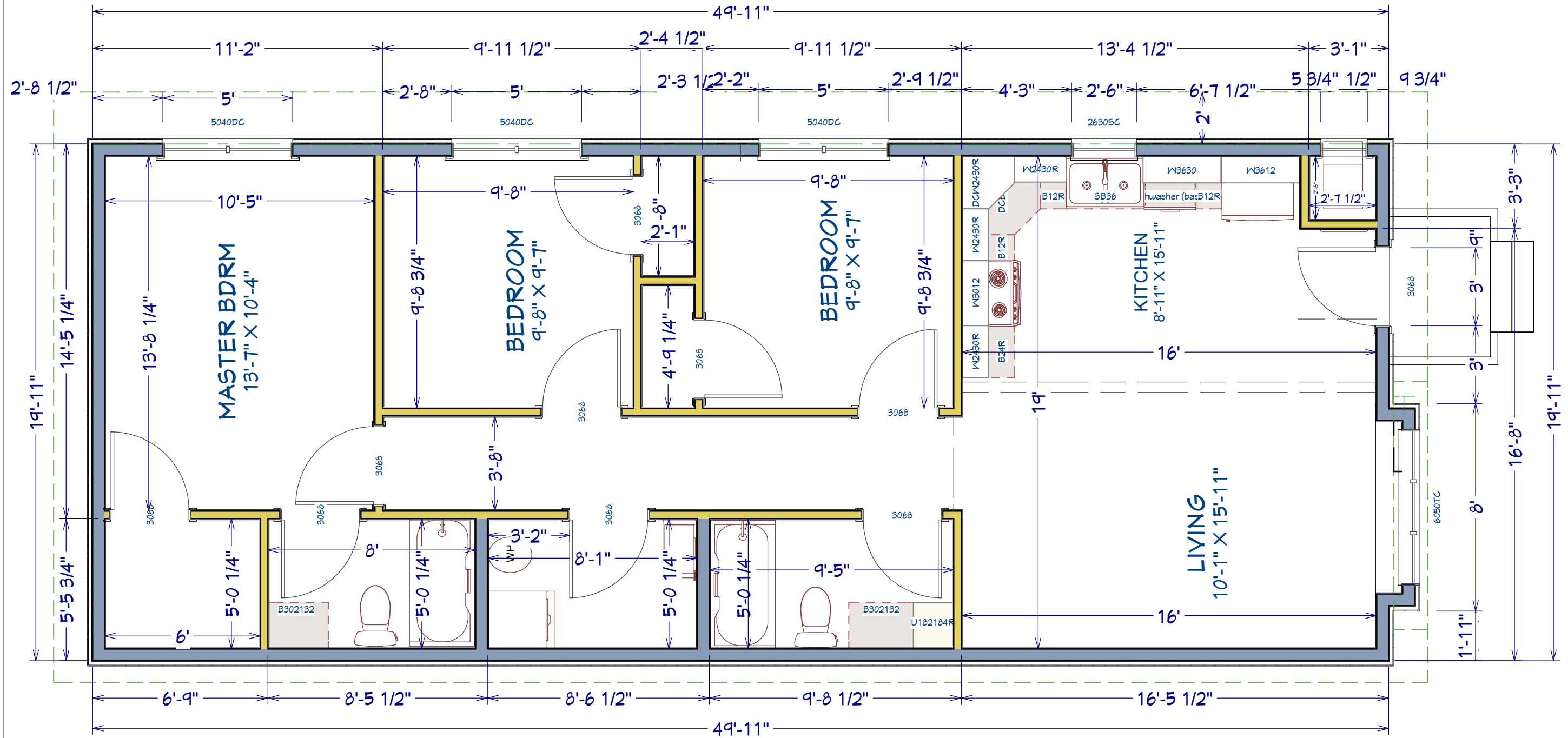
Door Schedule			
Type	Size	R.O. Size	Style
A	3'-0"x6'8"	38 1/2"x82 1/2"	Ins. Steel w/ Lite
B	3'0"x6'8"	38 1/2"x82 1/2"	Wood Passage
		50 1/2"x82 1/2"	
		32 1/2"x82 1/2"	

DakotaPlex
3-Bedroom RH

DakotaPlex 3-Bedroom RH

DESIGN BY:
Mike Harsma

5/3/2021



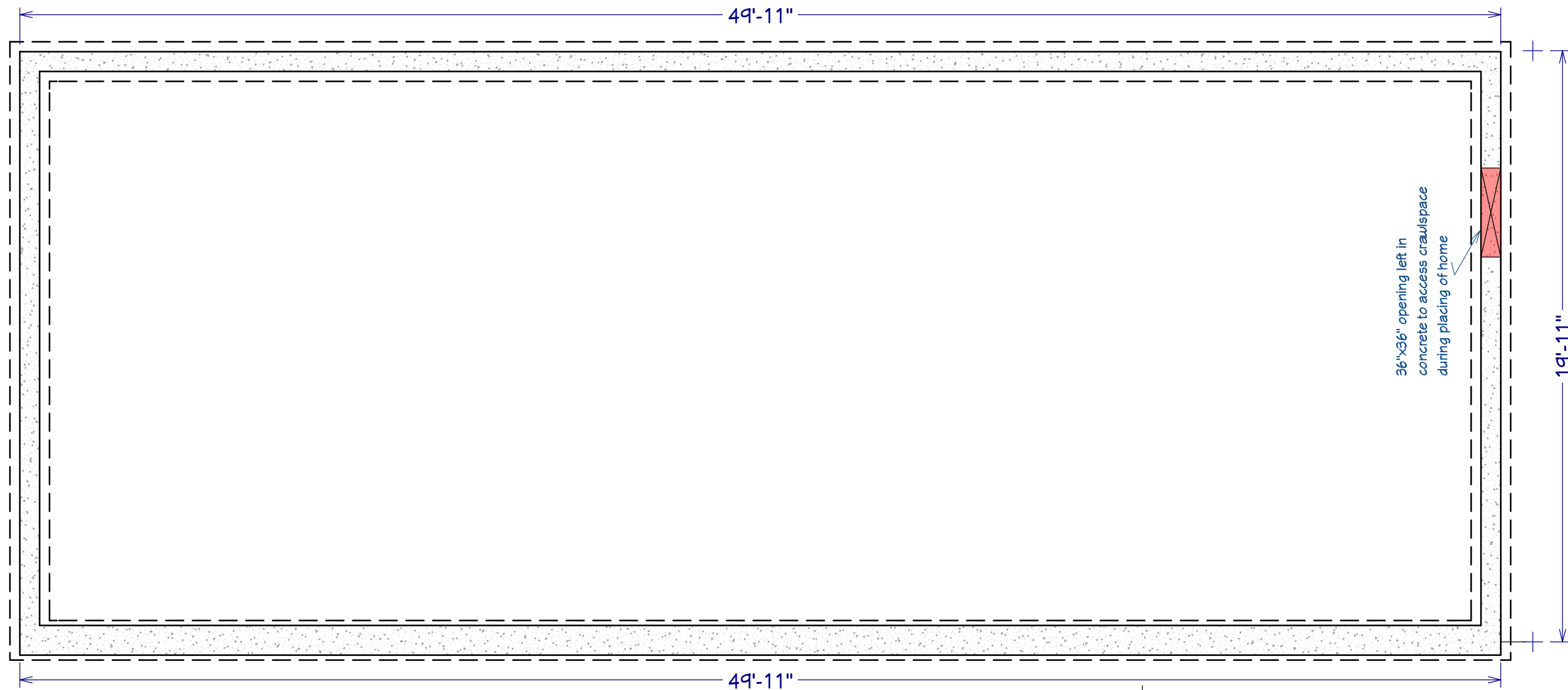
Main Floor

1000 sq ft

DakotaPlex
3-Bedroom RH

Dimensions are Framing Dimension. Verify surface dimension upon ordering 1/4" = 1'

DakotaPlex 3-Bedroom RH

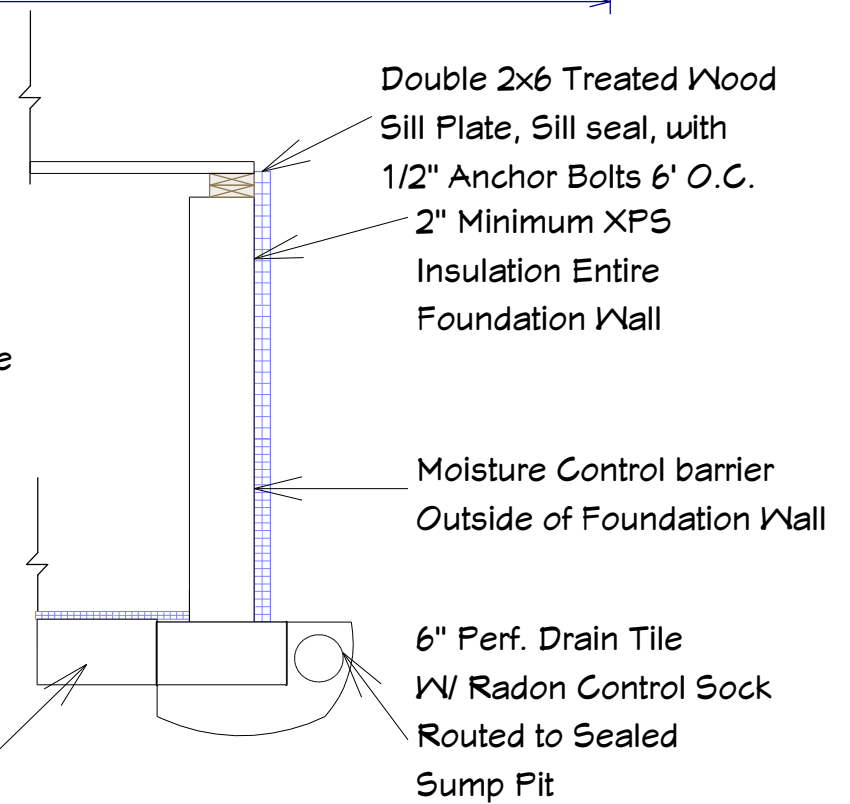


Crawlspace lay-out

General Notes:

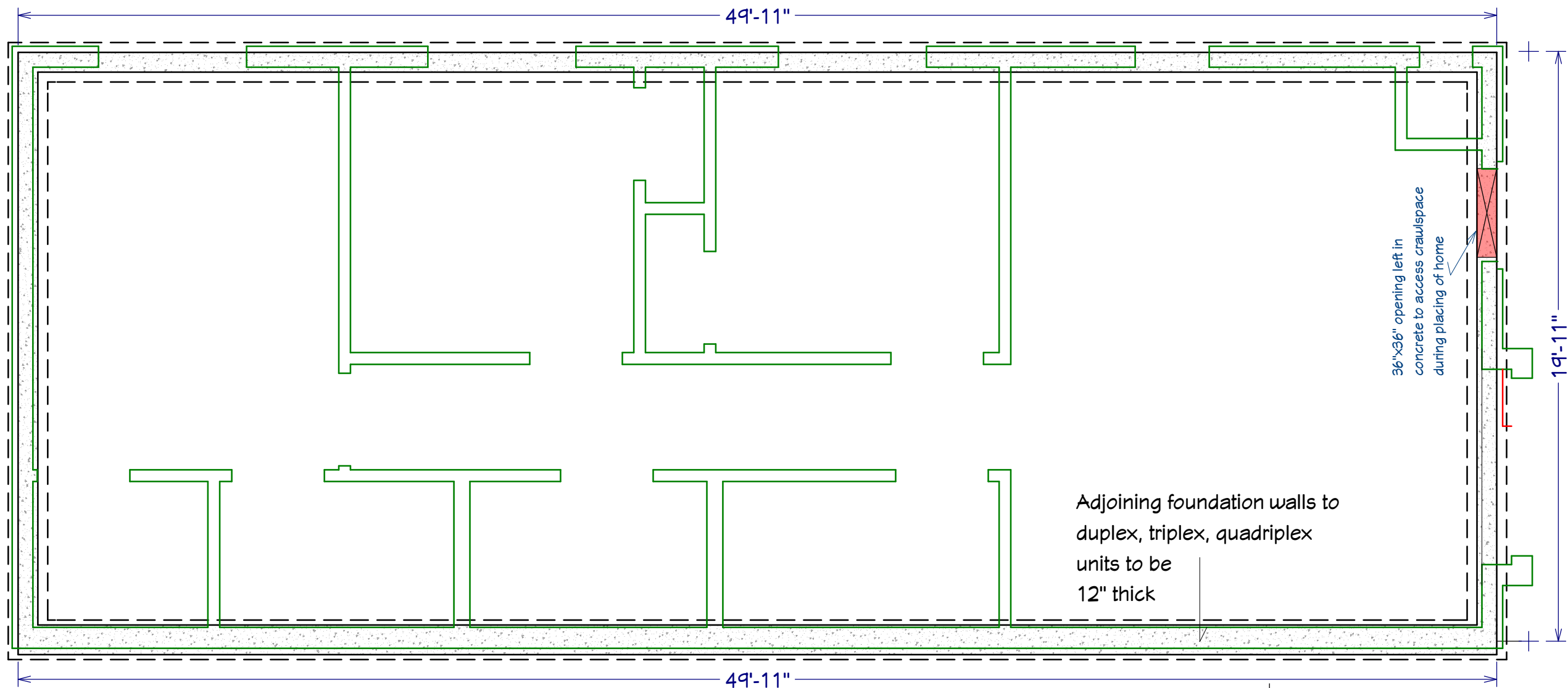
These Plans are meant to be a guide for foundation construction only. Because local codes and conditions vary widely across the state, owner/contractor should consult with local code officials and verify soil conditions prior to beginning work. Wall dimensions, blocking locations, reinforcement type and footing details could change substantially from location to location.

Note: Insulated and sealed crawlspaces should NOT have added ventilation but should be treated as a conditioned area. Supply air = to 1CFM per 50CFT of volume should be routed from the existing main floor duct system through the main floor Heat Recovery Ventilator



Crawlspace Wall detail

DakotaPlex
3-Bedroom RH



General Notes:

These Plans are meant to be a guide for foundation construction only. Because local codes and conditions vary widely across the state, owner/contractor should consult with local code officials and verify soil conditions prior to beginning work. Wall dimensions, blocking locations, reinforcement type and footing details could change substantially from location to location.

Note:

The DakotaPlex is designed to be placed on an insulated and sealed basement. It should be treated as a conditioned area. Supply air = to 1CFM per 50 CFT of volume should be routed to the area

**DakotaPlex
3-Bedroom RH**

5x8 Type X Gypsum sheathing
1 layer each unit for 2 layers
Applied by SDHDA

Double 2x6 PT plate field applied to leave 1-1/4" gap (may slightly overhang foundation)

12" foundation wall

DakotaPlex Common Foundation Wall

DESIGN BY:
Mike Harsma

5/3/2021

DakotaPlex 3-Bedroom RH