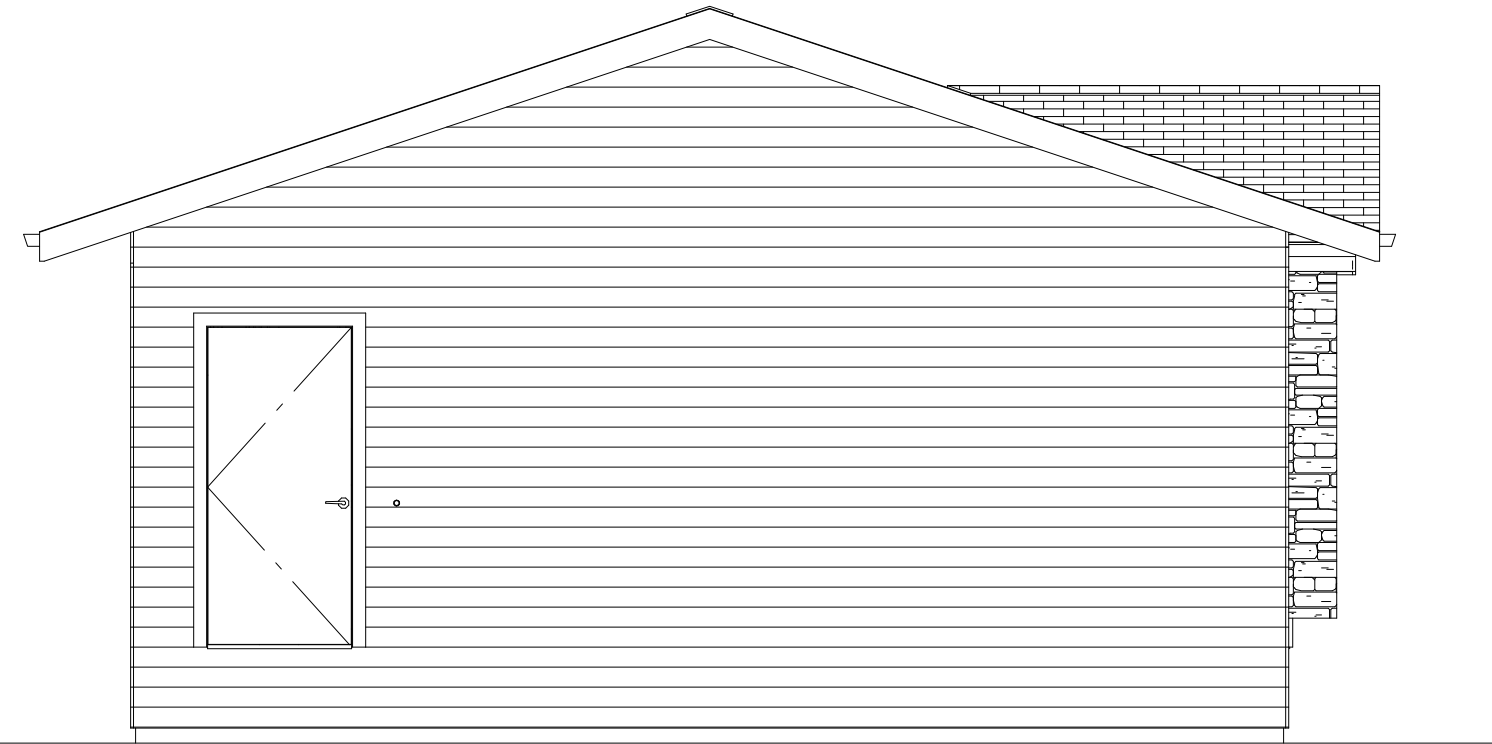


Front Elevation 1/4"=1'

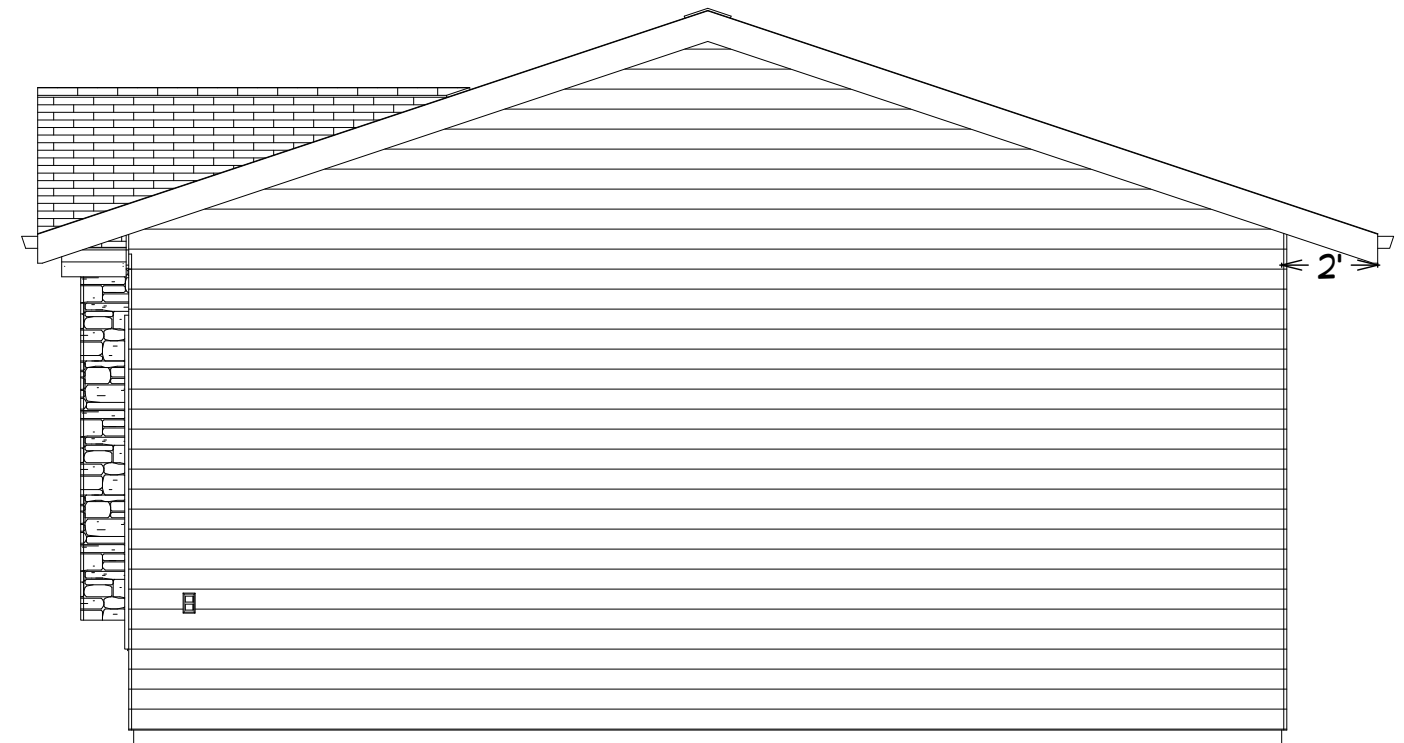
Governor's House 2-Bedroom
Door Left (reverse)



Right Elevation 1/4"=1'

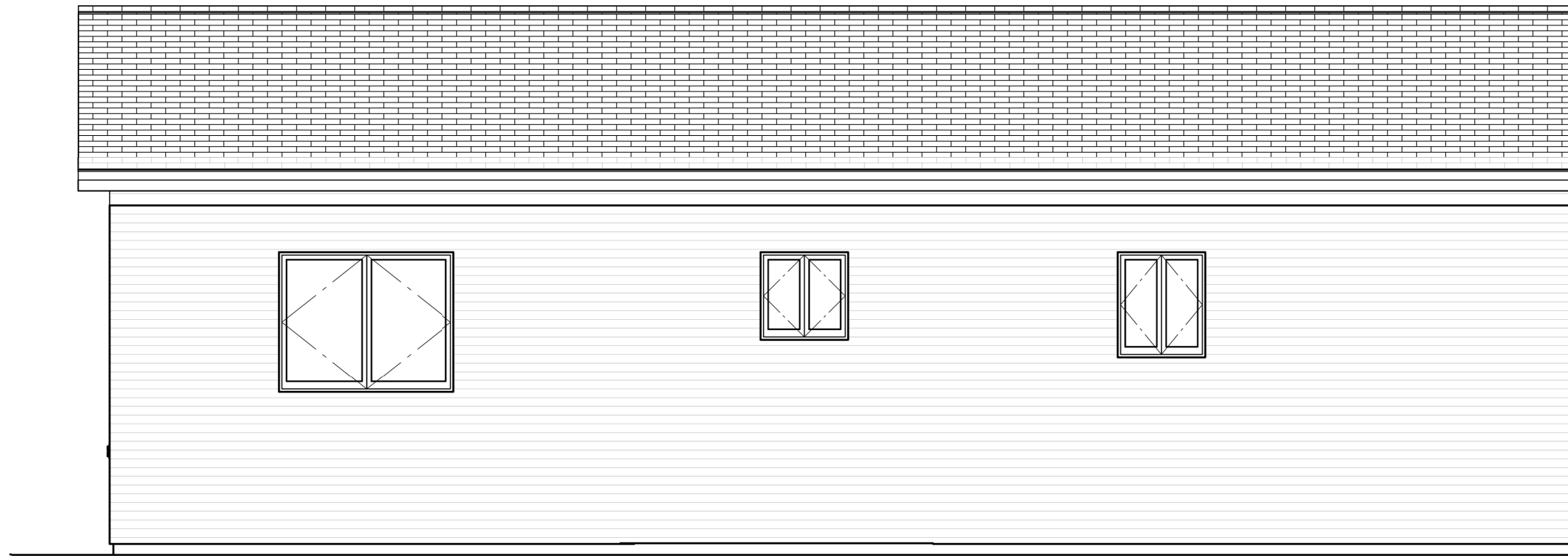
Door Schedule			
Type	Size	R.O. Size	Style
A	3'-0"x6'8"	38 1/2"x82 1/2"	Ins. Steel w/ Lite
B	3'-0"x6'8"	38 1/2"x82 1/2"	Ins Steel
C	2'-0"x6'8"	26"x82 1/2"	Wood Passage
D	3'-0"x6'8"	38 1/2"x82 1/2"	Wood Passage
E	4'-0"x6'8"	50 1/2"x82 1/2"	Wood Bifold
F	2'-6"x6'8"	32"x82 1/2"	Wood Passage
G	5'-0"x6'8"	62 1/2"x82 1/2"	Wood Bifold

Window Schedule		
Type	R.O Size	Style
A	60"x48"	Casement
B	30"x36"	Casement
C	30"x30"	Casement
D	72"x60"	Triple Casement

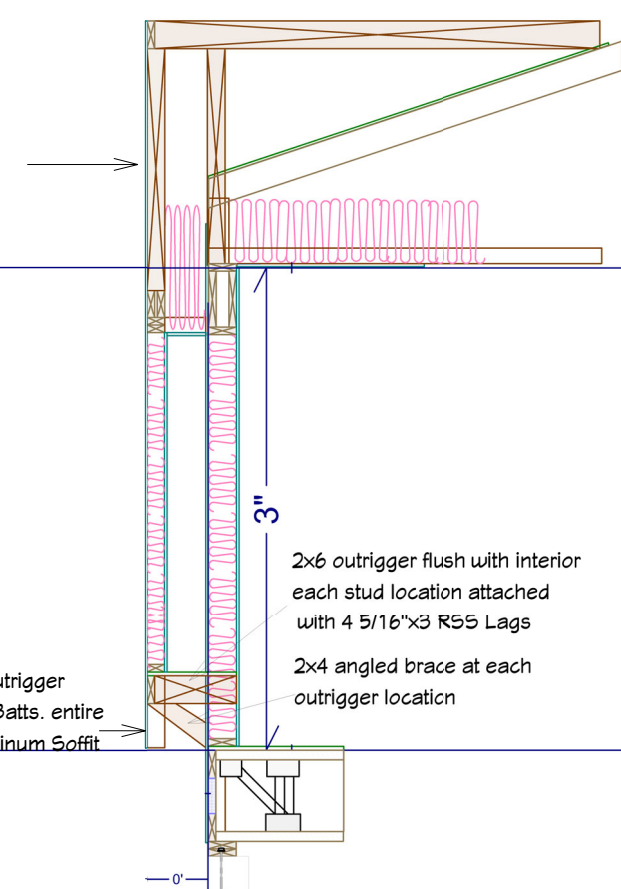


Left Elevation 1/4"=1'

Governor's House 2-Bedroom
Door Left (reverse)



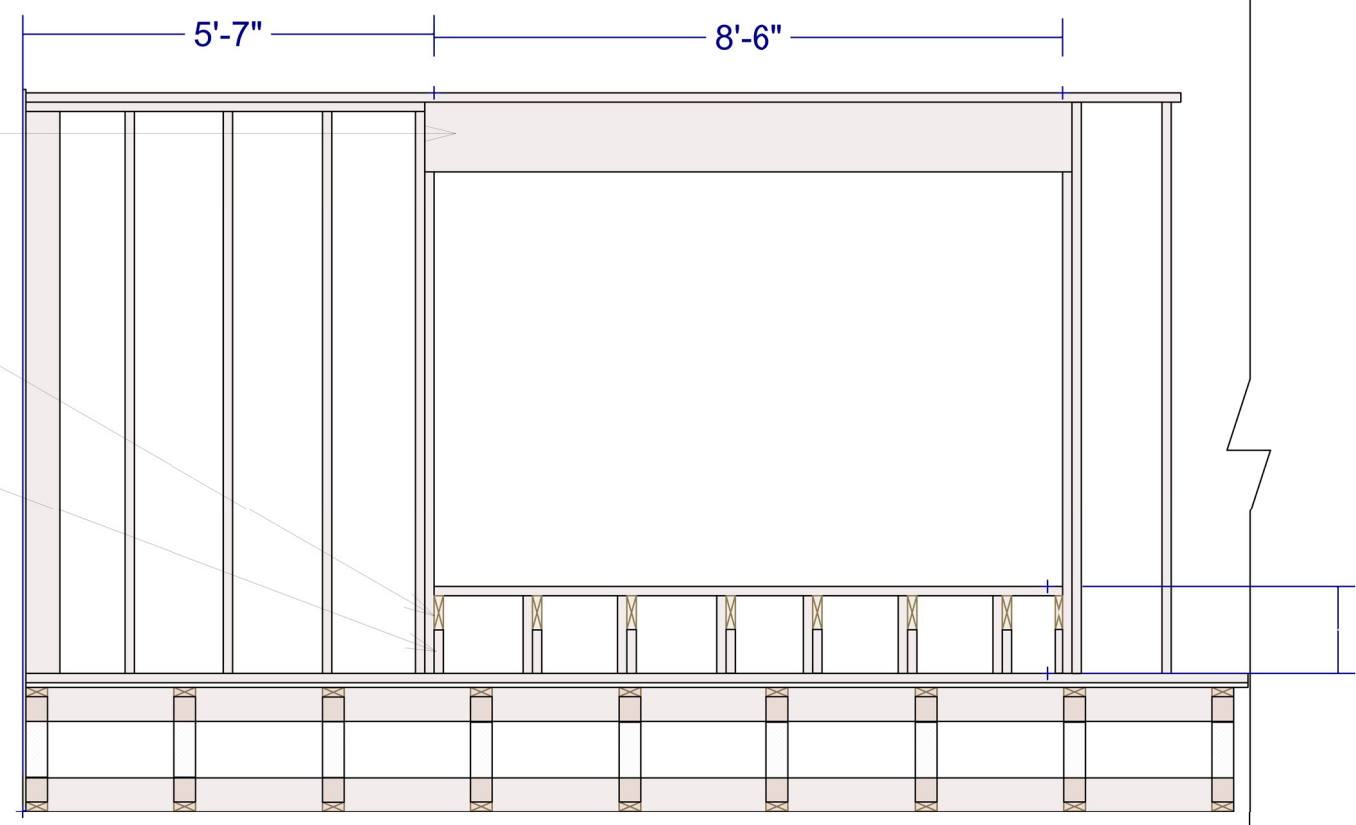
Rear Elevation 1/4"=1'



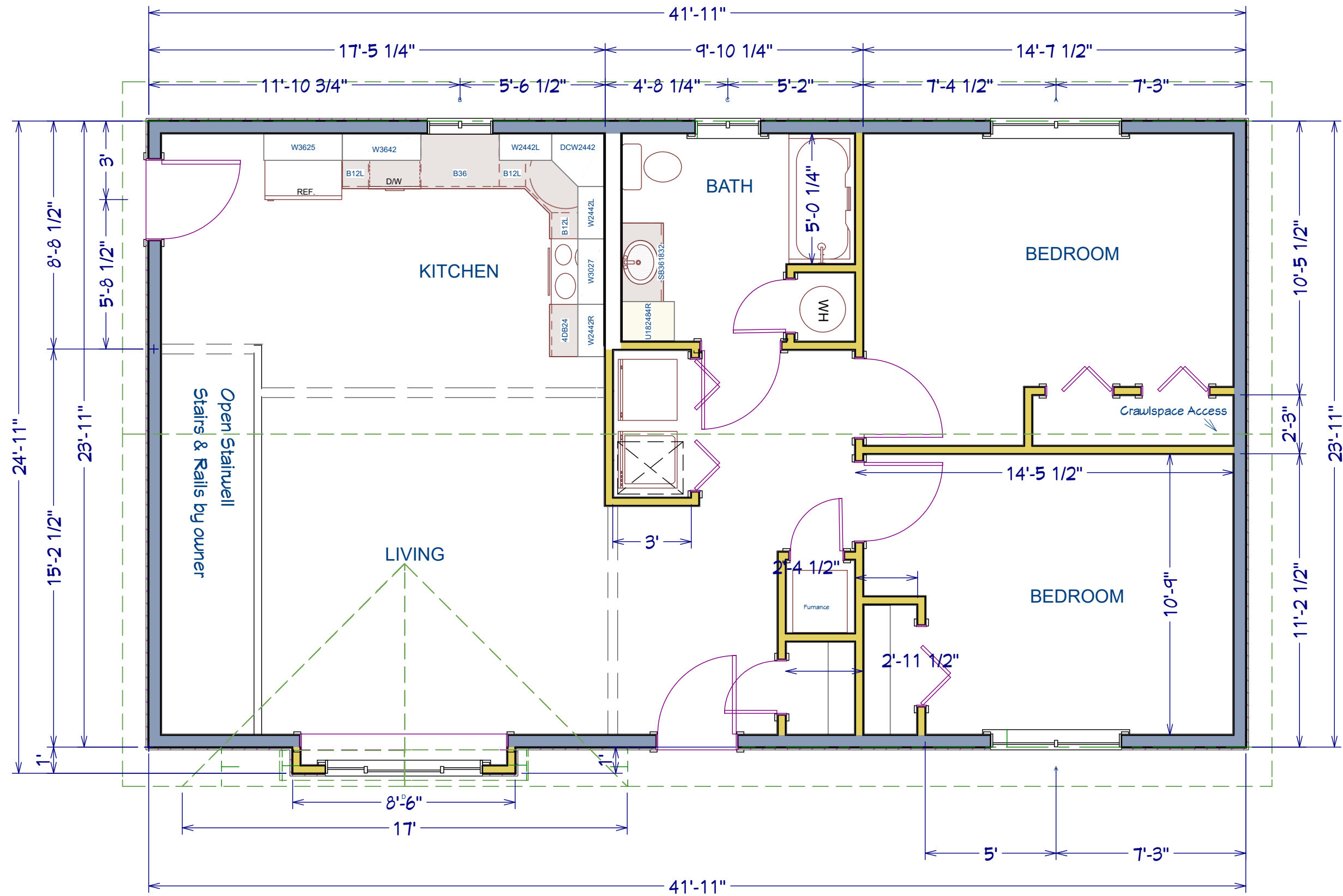
Box Bay Section

Governor's House 2-Bedroom
Door Left (reverse)

- Dbl. 2x12 Header at opening
- 2x6 Outriggers at each stud location
Attach flush to interior stud, screwed
with 4 -5/16x3" R55 Lags
- 2x6 Blocking under each
outrigger con't to floor
- 2x6 outrigger flush with interior
each stud location attached
with 4 5/16"x3 R55 Lags
- 2x4 angled brace at each
outrigger location



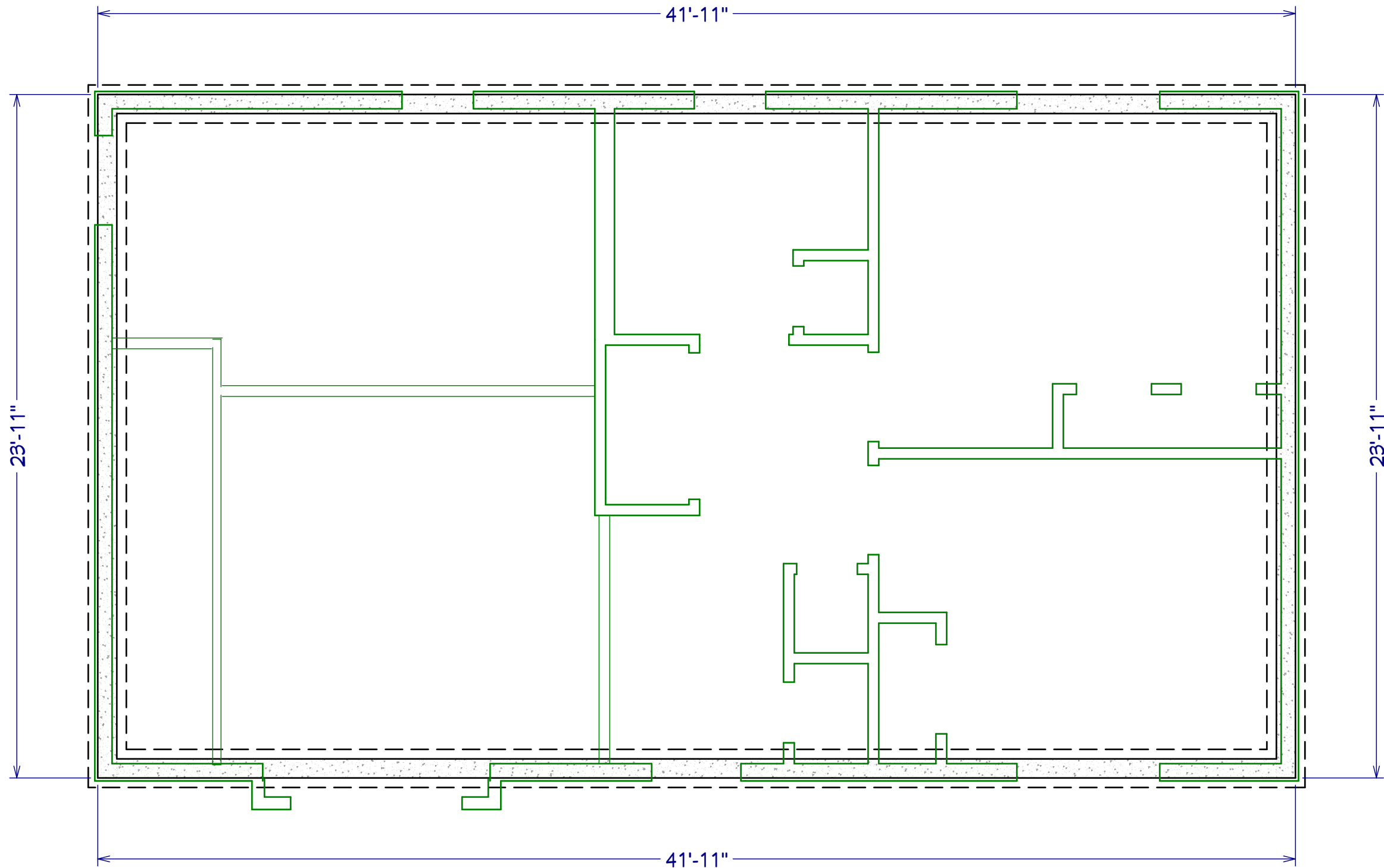
Box Bay Opening



Main Floor

Governor's House 2-Bedroom
Door Left (reverse)

Dimensions are Framing Dimension
Verify surface dimension upon ordering
1/4" = 1'



Foundation

Refer to Foundation Plans for actual dimensions and detail

Governor's House 2-Bedroom
Door Left (reverse)

DESIGN BY:

1/25/2023

Governor's House Program 2023
2-Bedroom Door Left (reverse)

