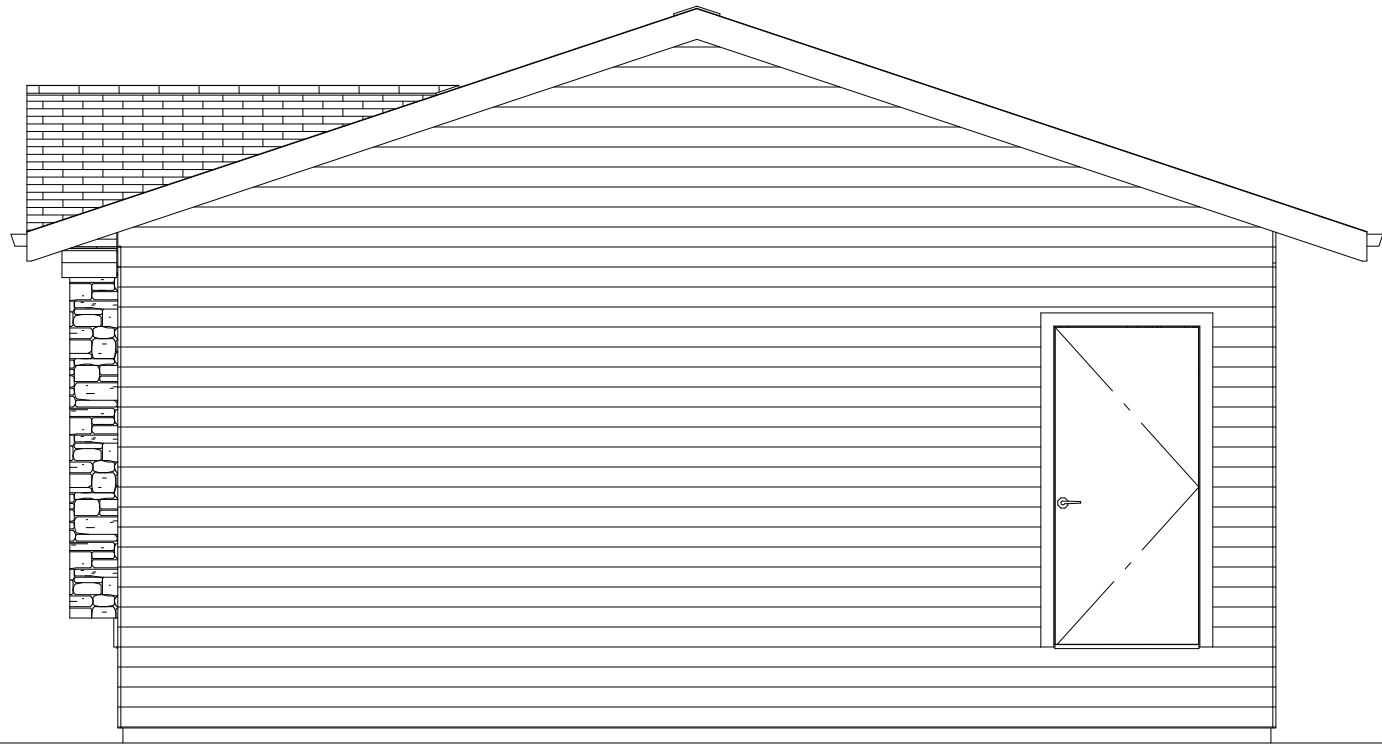


Front Elevation 1/4"=1'

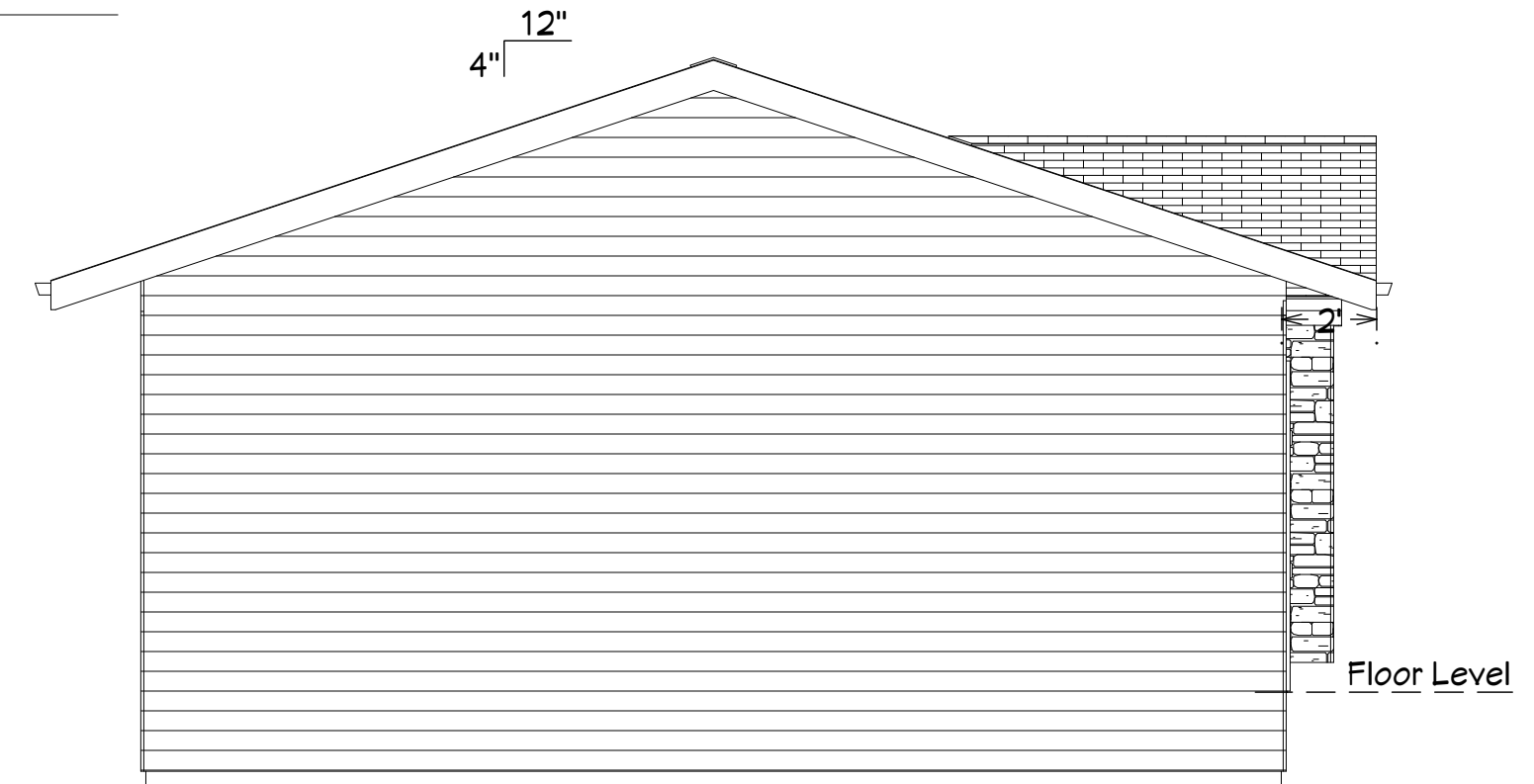
Governor's House 2-Bedroom  
Door Right (standard)



Right Elevation 1/4"=1'

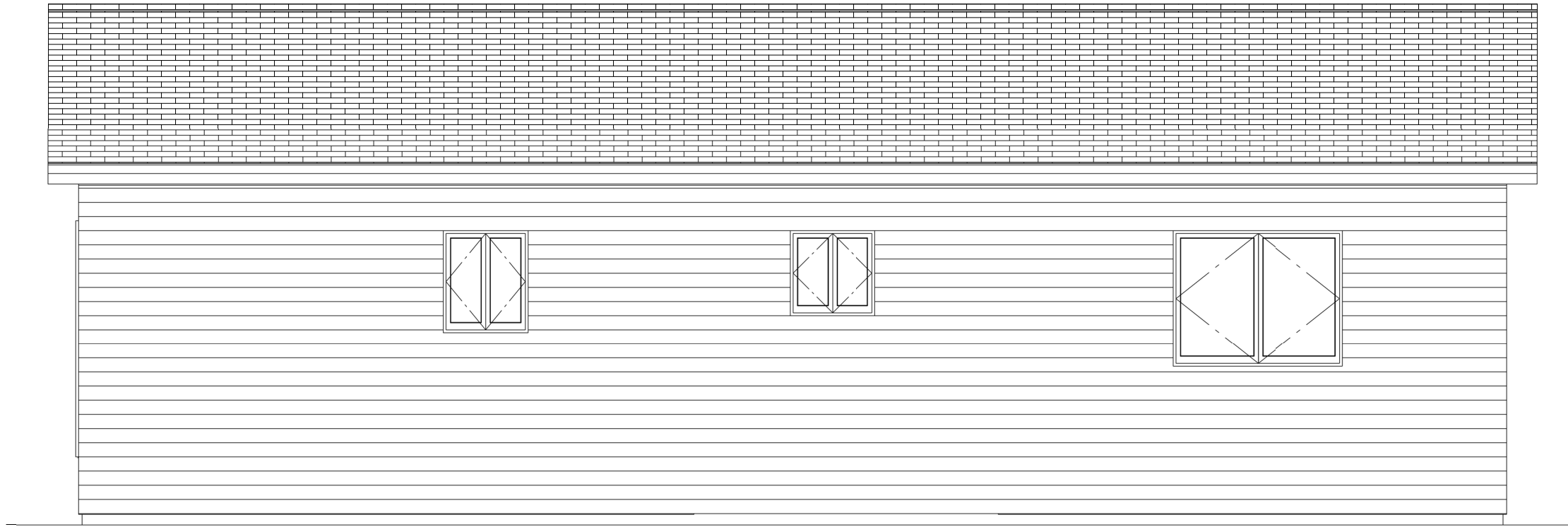
Door Schedule			
Type	Size	R.O. Size	Style
A	3'-0"x6'8"	38 1/2"x82 1/2"	Ins. Steel w/ Lite
B	3'-0"x6'8"	38 1/2"x82 1/2"	Ins Steel
C	2'-0"x6'8"	26"x82 1/2"	Wood Passage
D	3'-0"x6'8"	38 1/2"x82 1/2"	Wood Passage
E	4'-0"x6'8"	50 1/2"x82 1/2"	Wood Bifold
F	2'-6"x6'8"	32"x82 1/2"	Wood Passage
G	5'-0"x6'8"	62 1/2"x82 1/2"	Wood Bifold

Window Schedule		
Type	R.O Size	Style
A	60"x48"	Casement
B	30"x36"	Casement
C	30"x30"	Casement
D	72"x60"	Triple Casement

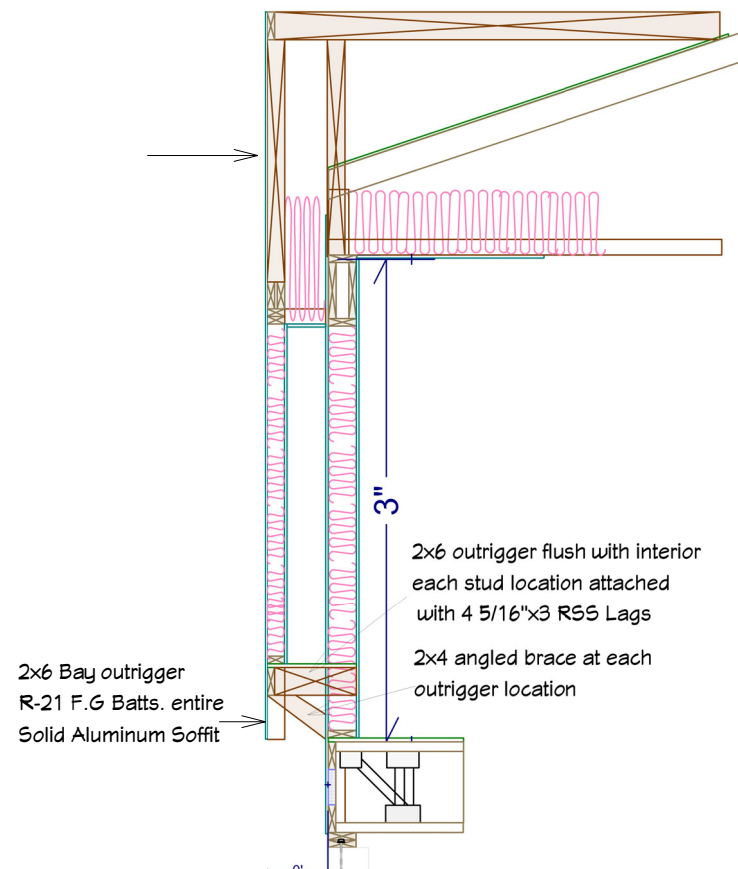


Left Elevation 1/4"=1'

Governor's House 2-Bedroom  
Door Right (standard)



Rear Elevation 1/4"=1'

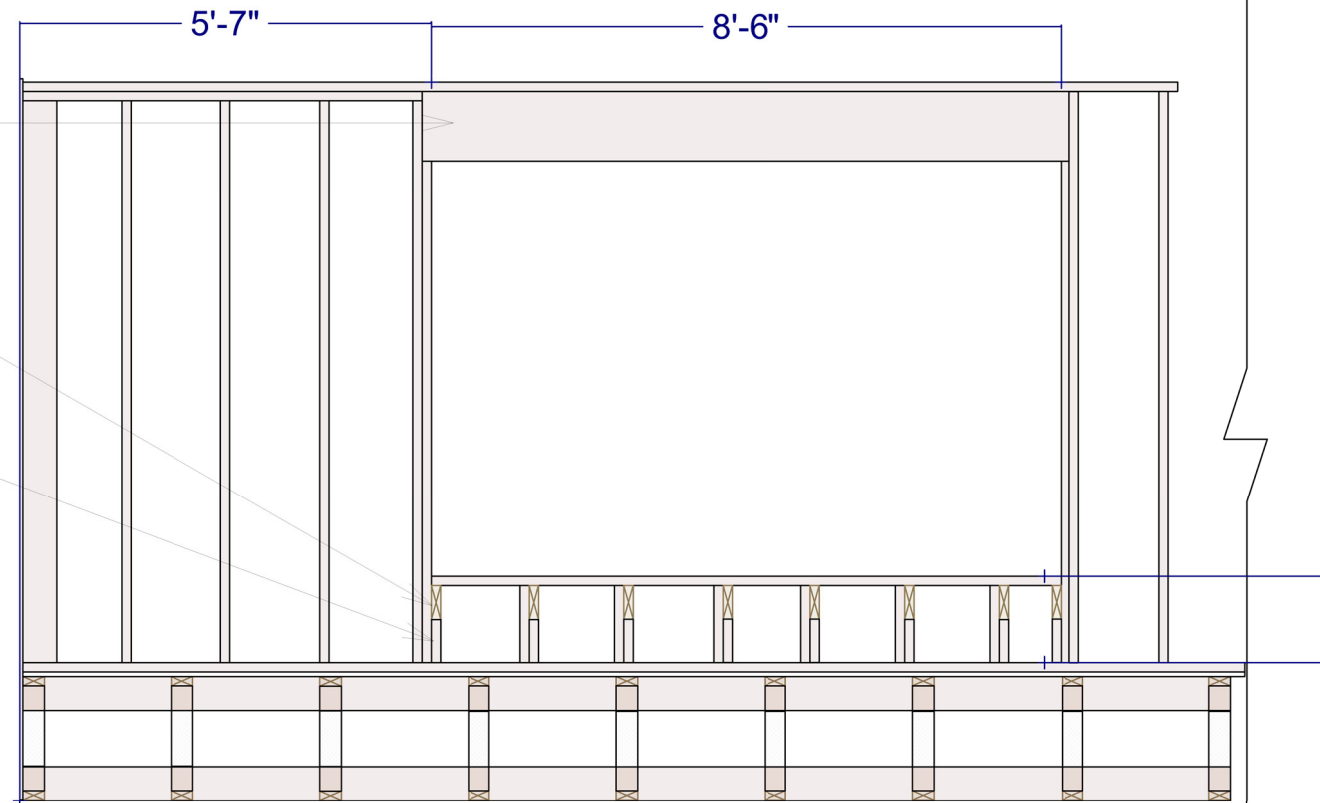


Box Bay Section

Dbl. 2x12 Header at opening

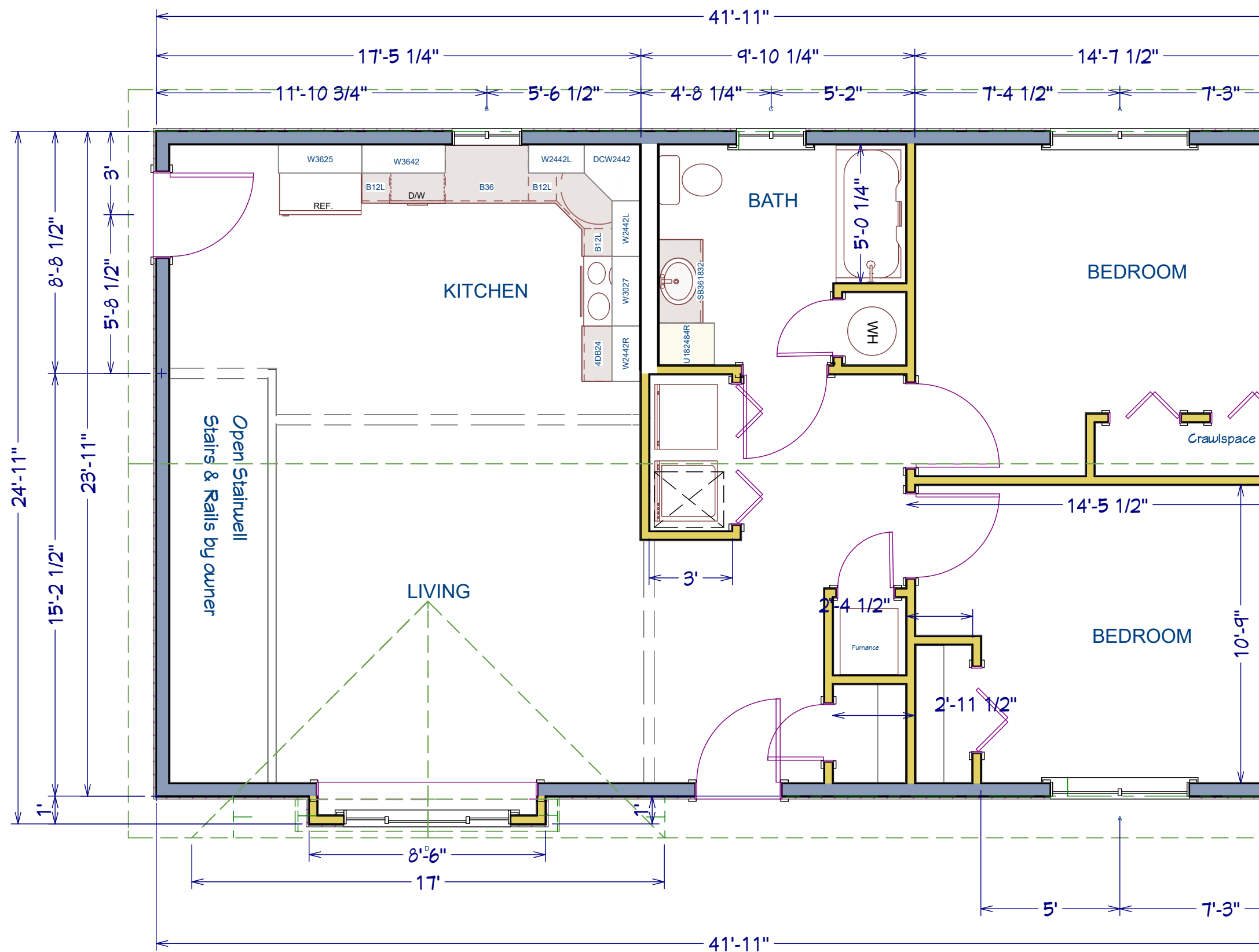
2x6 Outriggers at each stud location  
Attach flush to interior stud, screwed  
with 4 -5/16x3" R55 Lags

2x6 Blocking under each  
outrigger con't to floor



Box Bay Opening

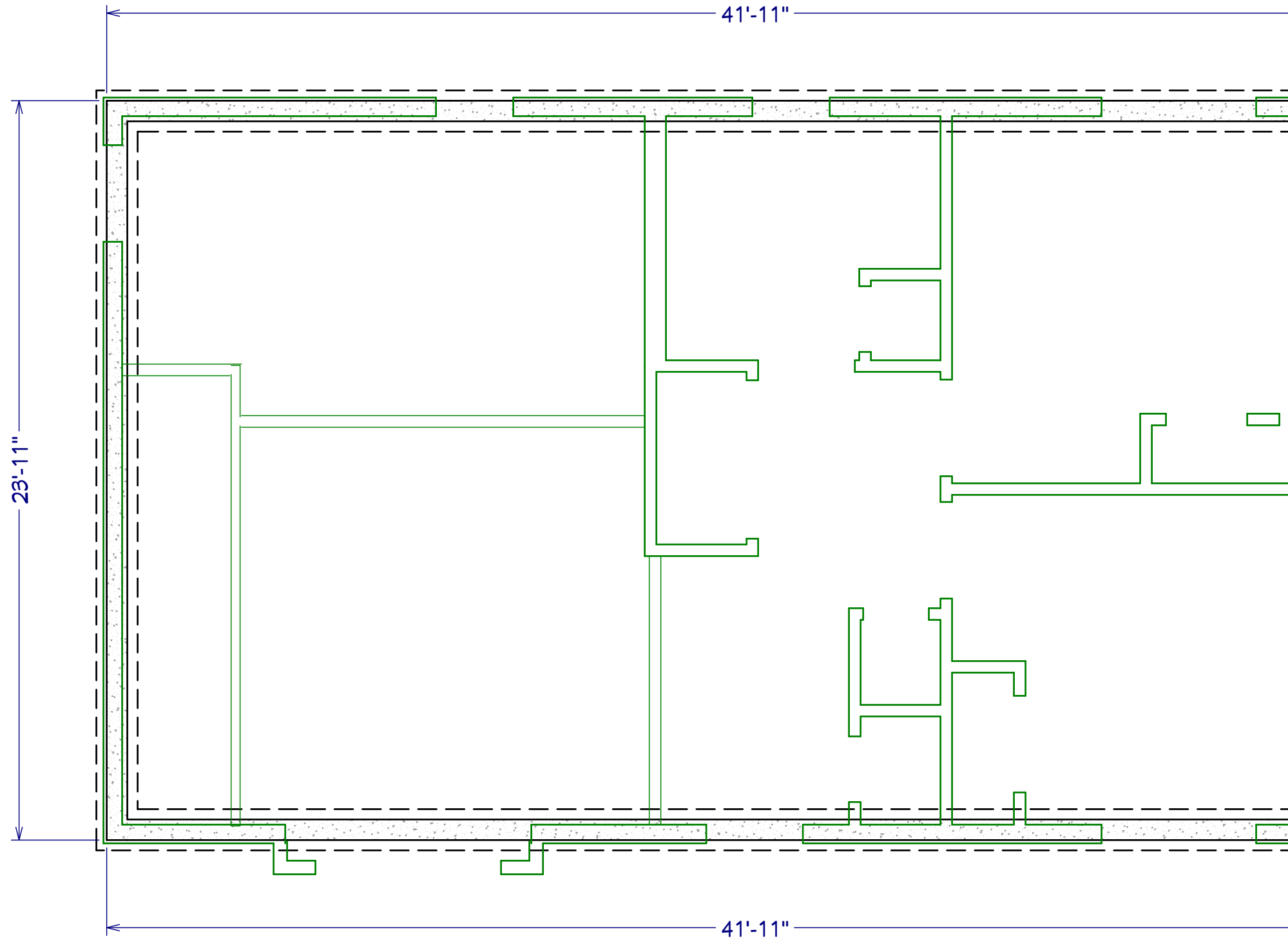
Governor's House 2-Bedroom  
Door Right (standard)



**Main Floor**

Governor's House 2-Bedroom  
Door Right (standard)

Dimensions are Framing Dimension  
Verify surface dimension upon ordering  
1/4" = 1'



## Foundation

Refer to Foundation Plans for actual dimensions and detail

Governor's House 2-Bedroom  
Door Right (standard)

DESIGN BY:

1/31/2023

Governor's House Program 2023  
2-Bedroom Door Right (standard)



5