



# The Governor's House Program

**AN AFFORDABLE HOMEOWNERSHIP OPPORTUNITY**



**SOUTH DAKOTA HOUSING**

South Dakota Housing was created by the South Dakota Legislature in 1973 with a stated mission to provide opportunities for quality, affordable housing for South Dakotans. SD Housing is a self-supporting, nonprofit entity known for our commitment for providing innovative financing solutions to create and preserve affordable housing. We utilize housing bonds, tax credits, and other federal and state resources to fund housing programs which provide mortgage and downpayment assistance, housing construction and rehabilitation, homelessness prevention, rental assistance and educational opportunities.

📍 PO Box 1237  
3060 E Elizabeth St  
Pierre, SD 57501

📞 605-773-3181  
800-540-4241

[sdhousing.org](https://sdhousing.org)

When purchasing your Governor's House, you have four choices of floor plans - a two-bedroom design, a two or three-bedroom narrow lot design and a three-bedroom design. You then have the choice of having the door to your driveway being on the right or left side of the house. Plans can be found at [sdhousing.org](https://sdhousing.org)

## FIND OUT MORE

Contact your local lender to find out more about financing options.

To view a model home when available nearest you or to purchase a Governor's House, visit [sdhousing.org](https://sdhousing.org) for a list of sales representatives in your area or call **800-540-4241**.



For information regarding Section 504 Accessibility, contact SD Housing's 504 Coordinator, Andy Fuhrman at 800-540-4241



FOR MORE INFO





# Why buy a Governor's House?

## THE GOVERNOR'S HOUSE IS

A reasonably sized, affordable home available to income-qualified individuals and families. It can serve as a great starter home for a young family or an easy to maintain retirement home.

The Governor's House program puts prison inmates to work learning marketable skills for life outside of prison, while providing affordable, energy efficient, low maintenance homes to those who may otherwise not be able to afford one. The simplified home design, in conjunction with the Governor's Inmate Training program, keeps the cost of these homes affordable.

## STANDARD FEATURES

- Heat recovery ventilator that provides fresh air for improved indoor air quality
- Onyx stained, shaker style, oak kitchen and bathroom cabinets with contemporary granite patterned high definition laminate counter-tops
- Stainless steel double bowl kitchen sink with single lever faucet and pull-out spray head
- Under mount LED kitchen cabinet lighting
- Timeless six panel, white interior doors with lever style lock sets
- Splatter knockdown textured walls painted in an off-white eggshell finish
- Oil rubbed bronze finished ceiling fixtures with etched glass bowls
- White finished baseboards, trim and mouldings
- Pantry, island and toilet topper available at an extra cost
- Homes can be made handicap accessible

## INTERIOR

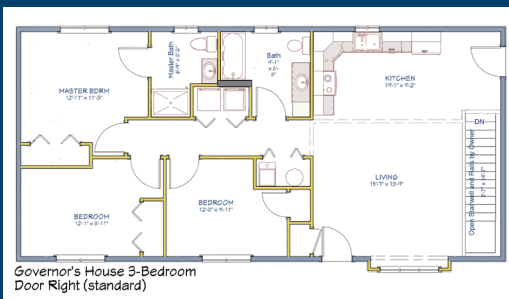
- Modern box bay window with stacked stone panels to enhance the home's exterior curb appeal
- Low maintenance double 4.5" clapboard vinyl siding in on-trend colors, paired with white under sill and corners
- 30-year architectural laminate shingles built to withstand strong winds
- Energy efficient, durable walls made up of 2x6 exterior wall construction with R-21 batt insulation and R7.5 x XPS foam sheathing  
Ceiling Height: 8 feet
- Electric or gas forced air heating with the added convenience of a high efficiency heat pump. Paired with the newly added central air conditioning system, the heat pump is able to transfer air to both heat and cool the home depending upon the season.
- High performance vinyl casement windows with .26 u-value that keep the heat in on cold days and keep the heat out on hot days
- Trusses framed for optional stairway

## EXTERIOR



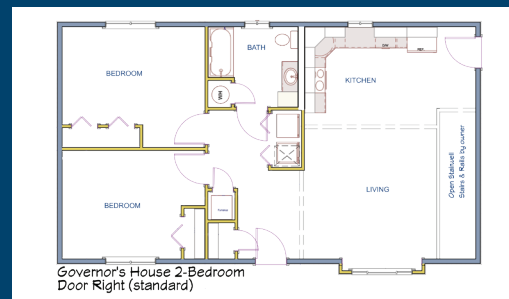
## 3 BEDROOM HOUSE

One and 3/4s Baths, 1200 Sq. Ft., Dimensions 24' x 50'



## 2 BEDROOM HOUSE

One Bath, 1008 Sq. Ft., Dimensions 24' x 42'



## NARROW LOT HOUSE

One Bath, 1008 Sq. Ft., Dimensions 24' x 42'

